

CASE STUDY

TRANSFORMING FUTURE HEALTHCARE

PROJECT OVERVIEW

Working alongside trusts, design teams and contractors, Akerlof is supporting the development of new hospitals with a pipeline value in excess of £1.5bn.

Collaborating with project teams across the UK, we are developing leading strategies that are transforming the way hospitals are designed and constructed, making them fit for the future.



WHAT WE DID

By embedding Modern Methods of Construction (MMC) and platform principles, including standardisation, repeatability, circularity and DfMA at the earliest stages of a project, we are helping our clients achieve better patient care, improved productivity, de-carbonisation and positive social outcomes.

We ensure all strategies developed are clearly aligned to each trust's specific policies and goals, alongside integrating wider themes such as digitisation, social value, sustainability and facilities management. We then work as part of the wider team to practically realise these benefits at all levels across the project or programme.

THE IMPACT



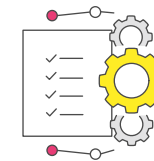
Supported seven healthcare schemes to date through business case and into construction



Work recognised as best-in-class by NHSEI



Demystifying what is often seen as a complex subject for stakeholders, leaving a legacy of understanding



Making policy deliverable on site to meet the prioritised needs of government, trusts and the communities they serve

DON'T JUST TAKE OUR WORD FOR IT...

“ Akerlof provided the most professional and personalised service which addressed the client brief and accommodated change in a flexible manner having an open mind to innovation and going extra mile. The outputs produced are industry exemplar. ”

The Hillingdon Hospitals NHS Foundation Trust



GET IN TOUCH

John Handscomb
07305 486 581
John.Handscomb@akerlof.co.uk